

Carters Park

Holbeach
Discovery
Trail

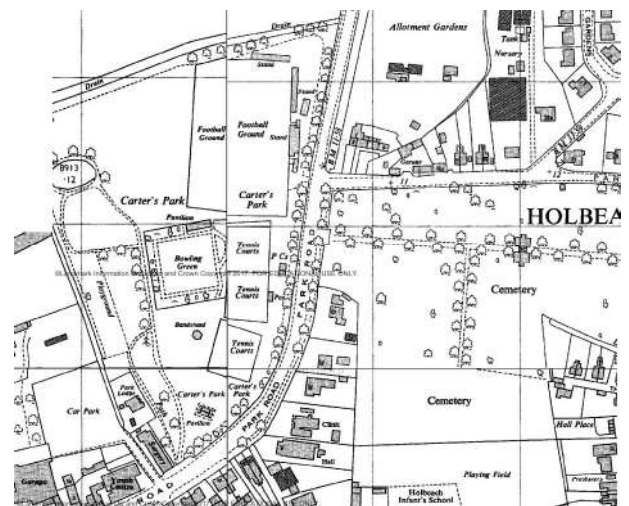
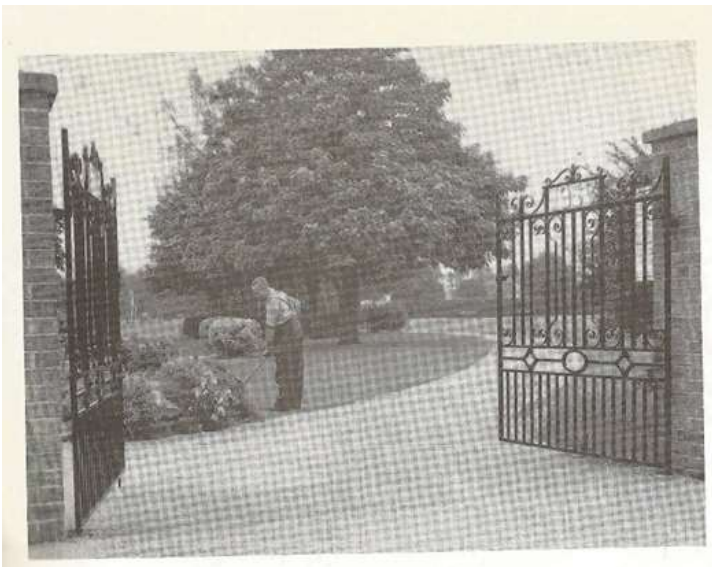
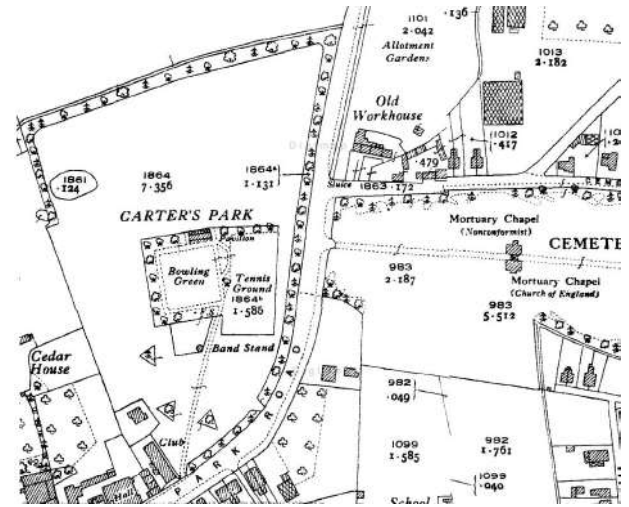
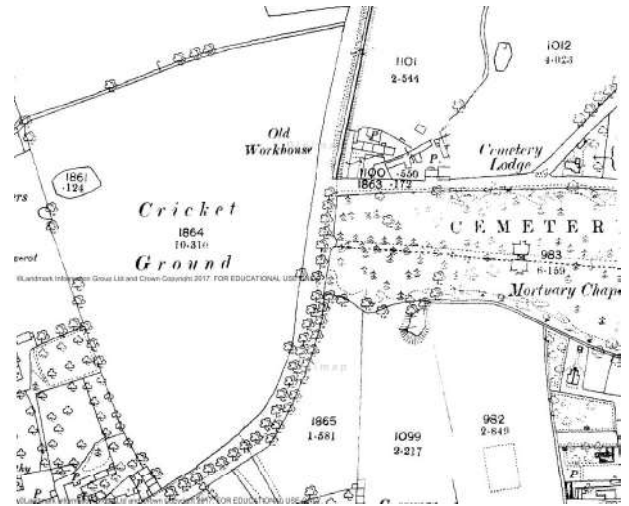


The park takes its name from Herbert Carter a local landowner who gave the grounds to the town in 1929. In the 1920s a pavilion, bowling Green and football pitch were added to the area followed by tree planting and a speedway track. Over the years further additions followed with the park bungalow, children's play area and bandstand. As times have changed so to have the facilities but the park continues to be a well-used facility in the centre of the town. As you walk through the park take the path between the football club and bowls club and you will find a mural painted on the football club fence.

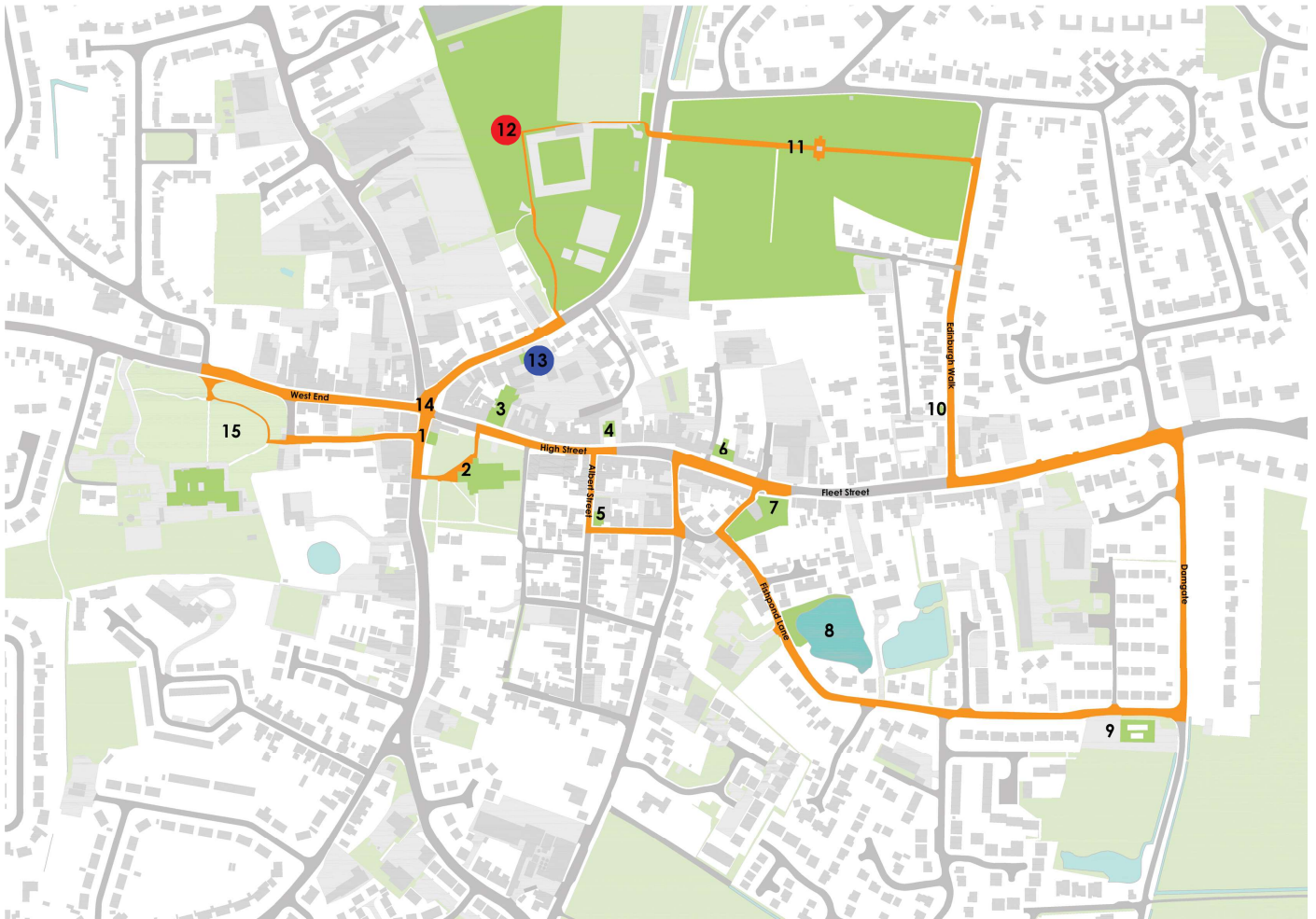
This has been designed and painted by pupils from Spalding High School and is an ongoing project which adds some colour and interest to the park. Continue to walk up past the play area to the main gates and enjoy the many specimen trees planted over the years and rose beds planted more recently. At the main entrance the gates were added to celebrate the Queen's coronation in 1953.



Carters Park



Carters Park



You Are Here



Next Stop - Park Hall