

This Sign was Sponsored by:

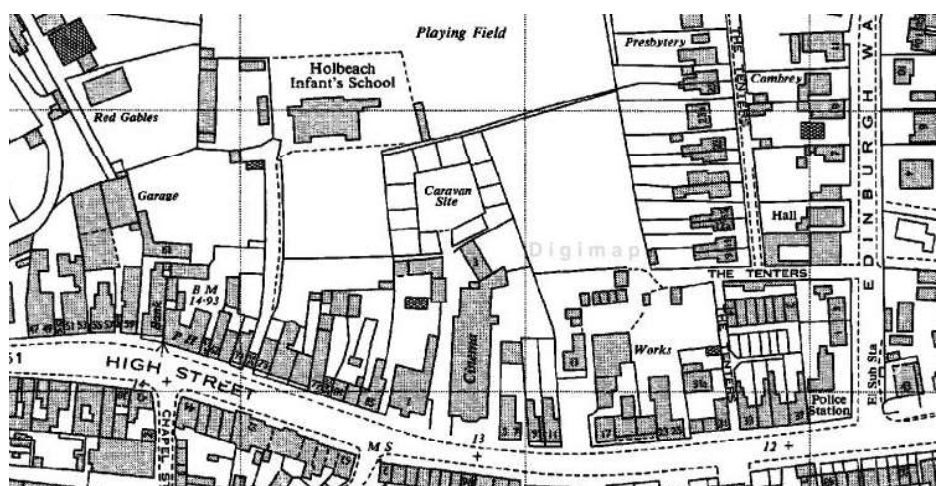
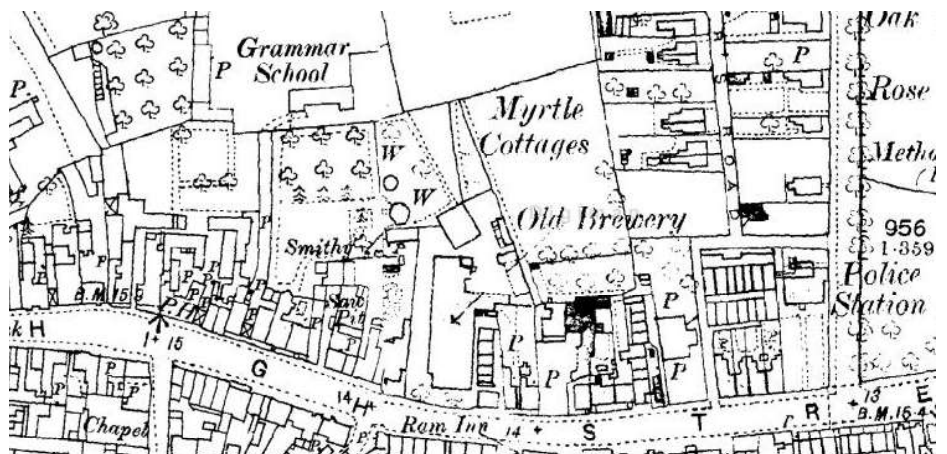
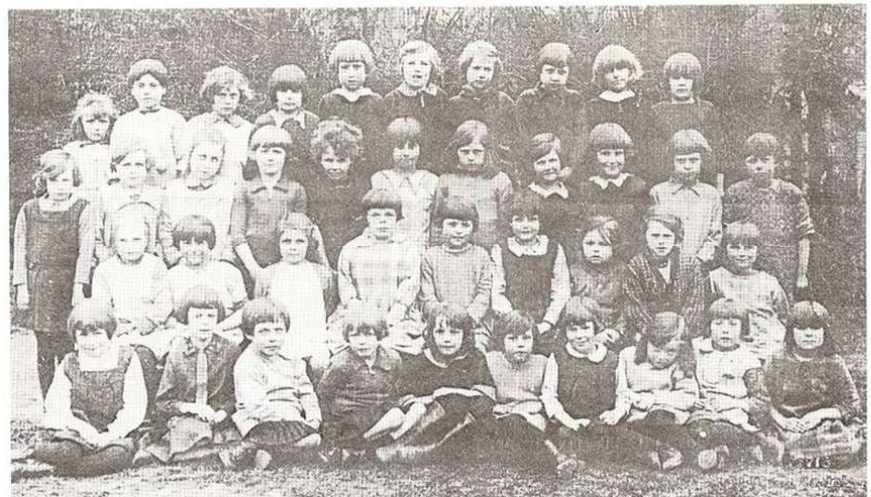
Dervensure  
<https://www.dervensure.co.uk/>

## The Grammar School Terrace

Holbeach  
Discovery  
Trail

These houses were originally built as dormitories and headmasters' accommodation for the school built behind in 1877, this is now used by Small Saints preschool. The school was built to accommodate around 80 boys including 20 boarders. The school catered for boys between 7 and 16. When an alternative school opened in church St numbers at the Grammar school declined and in 1892 it only had 12 pupils and by 1904 it had closed. In 1914 the school building was taken over by the Church of England All Age Girls Elementary and this continued until the late 1950s when the George Farmer school opened. The building then became the Infant school.

Holbeach Schoolgirls in 1930

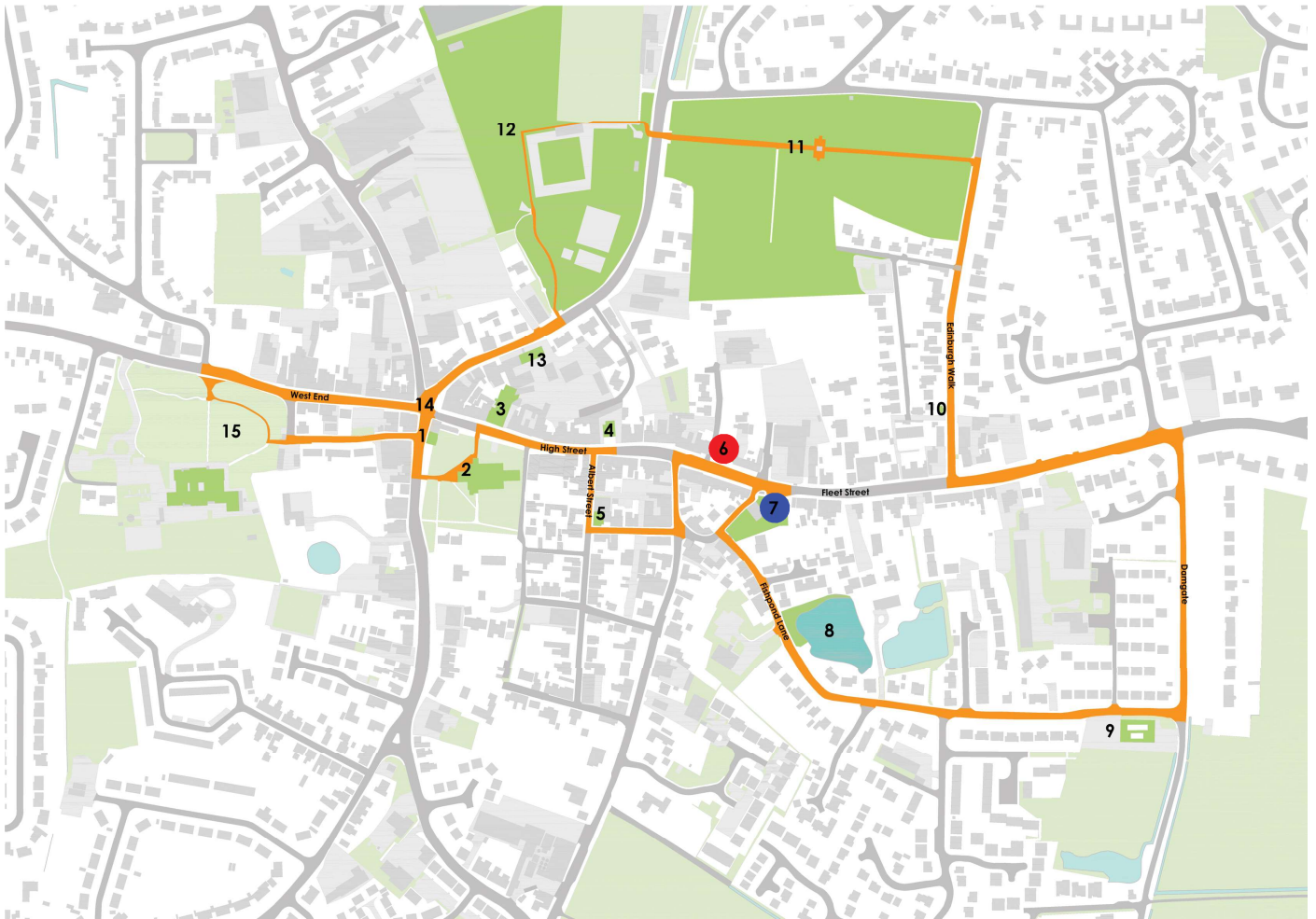



This Sign was Sponsored by:

Dervensure  
<https://www.dervensure.co.uk/>



# The Grammar School Terrace



 You Are Here

 Next Stop - St Johns Street